

**EMI
Aerospace**



**EMI
Aerospace**

Why choose us?

Our customers' success is our driving force.

We turn concept designs into reality. With decades of experience and engineering expertise, we can take any project from concept to production efficiently and effectively.

What sets us apart? Our experienced craftsmen, customer focus, constant innovation, and drive to be your solutions provider.

We are AS9100D and Nadcap certified and ITAR compliant.

**Forming today.
Shaping mobility tomorrow.**



**Innovative structural solutions
for the aerospace industry**

**Providing unique capabilities in
exotic metals and complex shapes**



0.063" 321SS part with a diameter of 6 ft

Lip skin manufactured as a one-piece stamping



**Engineering solutions for your
metal forming needs in the
USA since 1959**

EMI Aerospace
6385 Wall Street
Sterling Heights, MI 48312
(586) 977-7800 | aero.sales@qmc-emi.com
www.qmc-emi.com



EMI
Aerospace

We are the leader in innovative structural solutions for the aerospace industry

We provide complete vertical integration from prototype to production

Our differentiators

- Exotic alloy forming
- Metal forming simulation
- Hot stamping
- NADCAP certified AC7116 LBM
- Large part capacity

Our capabilities

- Engineering
- Foundry
- Machining
- Stamping
- Hot stamping
- Metal fabrication
- Bending
- Laser
- Assembly process
- Production

Our certifications

We hold multiple certifications across the aerospace and automotive industries to ensure we operate in the most efficient way, while also manufacturing the highest quality products. Our certifications include:

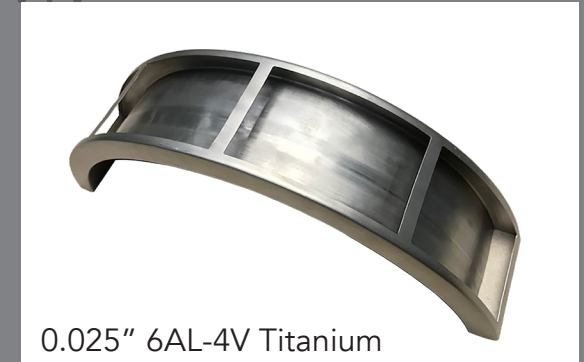
- IATF 16949
- AS9100D
- Nadcap AC7116 LBM
- ISO 14001:2015
- ITAR compliant

Our goal: To shape the future of mobility



0.040" 718 Inconel®

Using the latest available simulation technologies, we reduce the development cycle and improve first-time quality



0.025" 6AL-4V Titanium

Our complex processes allow the forming of difficult alloys such as titanium, stainless steel, Inconel®, and aluminum



0.040" 2219 T62 Aluminum

Stampings are trimmed using 5-axis laser cutting or machining to produce more precise parts



0.032" 625 Inconel®

Hot stamping with automated process controls provides consistent high quality components